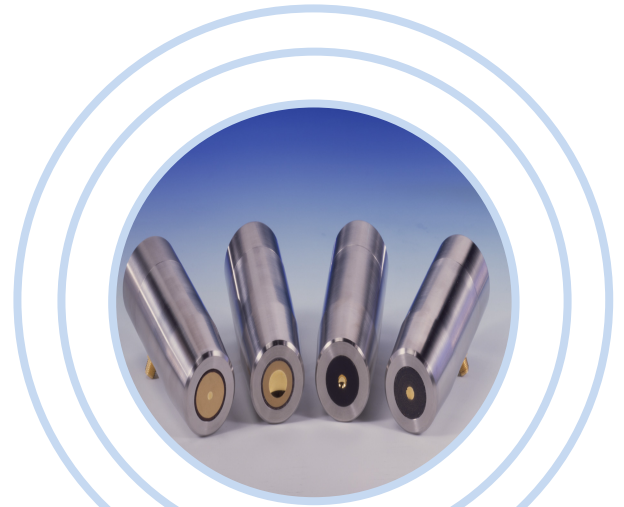


Gen6™ C-SAM[®]

Kept the Best & Improved the Rest!



**Matched 500 MHz Bandwidth
Pulser/Receiver and Transducers**

generate superior images as both are designed and manufactured by Sonoscan for optimum performance.

The New Generation of C-SAM Technology

Sonoscan kept the best of the previous generation, with the broadest range of capabilities, the most advanced features, and an ergonomic, user-focused design, and then improved the electronics platform and software by incorporating PolyGate™ technology and Sonolytics™ with new, more intuitive operator interface windows. The Gen6™ delivers the ultimate in advanced acoustic microscope imaging.

Features:

- PolyGate™ technology with Multi-Gate™ and Probing-Gate™ functions capable of single and multi-focus imaging
- Up to 100 gates per channel with 2 Gsps sampling rate
- Windows® 7 Ultimate for multi-language and 64 bit capabilities
- Inertially Balanced Linear Motor Scanner with counterweight to minimize vibrations and ensure optimal scanning results
- Tower mounted scan reference platform and sample fixture
- Open-access scanning area makes loading and unloading easy and is capable of scanning JEDEC trays or a 300mm wafer
- Water recirculation and inline temperature control options available
- Virtual Rescanning Mode (VRM)™ stores comprehensive data and enables you to perform a complete analysis of a sample, even when it is no longer available
- SonoSimulator™ is integrated into the Gen6 to help image thin, multi-layer samples, such as Stacked Die

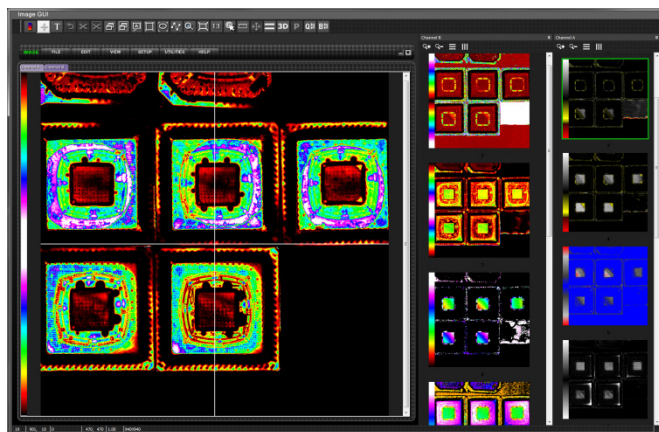


Gen6™ Sonolytics™
New operator interface



Gen6™ C-SAM®

The Gen6™ C-Mode Scanning Acoustic Microscope is the new generation in Acoustic Microscopy Imaging (AMI) innovation. While taking the best from the Gen5™ (e.g.: its cutting-edge technology, advanced features, aesthetics, and ergonomics), the Gen6 improves upon the rest and takes acoustic imaging to the next level.



The Gen6 delivers the broadest range of capabilities available. Whether your needs are for nondestructive failure analysis, process development, R&D, High-Rel qualification for a military application, or low/medium-volume screening, the Gen6 is the one C-SAM system that can meet all of your demands. Gen6 is perfect for a variety of applications, such as; Microelectronics, MEMS, SSL LEDs, Power Modules, Solar, High-Tech materials, etc.

Advanced Sonoscan® capabilities such as PolyGate™, SonoSimulator™, Virtual Rescanning Mode (VRM)™, and optional Frequency Domain Imaging (FDI)™ add value and confidence. With its large, easy-access, illuminated scanning area, the Gen6 has the capability to efficiently scan everything from a single part, to a 300mm wafer, with its tower referenced scan and fixtures.

In addition to being packed with leading Sonoscan innovations, the Gen6 was carefully designed with the user in mind. Its ergonomic features make it comfortable and convenient to use. Its advanced applications Sonolytics™ software and new intuitive operator interface menus help maximize results, while saving operator time. Plus, it's open access and illuminated tower referenced sample stage allow for easier loading and unloading of samples. The Gen6 is truly the new generation C-SAM, delivering a package of technology, ergonomics, and advanced Sonoscan-developed features that cannot be found anywhere else.



Sonoscan®
Sound Technology With Vision

Leaders in Nondestructive Internal Inspection

Since its inception, Sonoscan has focused on developing superior Acoustic Micro Imaging (AMI) technologies to help our customers build higher quality products. Sonoscan remains the most trusted authority on the application of AMI for nondestructive internal inspection and analysis. Sonoscan patented systems span the laboratory and production environments and are regarded as the standard for accuracy and throughput.

Sonoscan Delivers:

- **Superior Image Quality** ensured by the designs originating from our own transducer/lens development lab and fabrication facility
- **Extraordinary Data Accuracy** through our proprietary signal-processing algorithms, analysis functions and digital image/data formats
- **High Throughput Rates** by developing the most advanced integrated features, automation and analysis functions within our instruments
- **Unsurpassed Technical Expertise** with more than 20 dedicated and highly experienced AMI applications engineers on staff

For a complete list of Sonoscan's products, please contact Sonoscan at 847.437.6400 or visit our website (www.sonoscan.com).